



****AVAILABLE IMMEDIATELY****

****FURNISHED** **FIRST FLOOR FLAT****

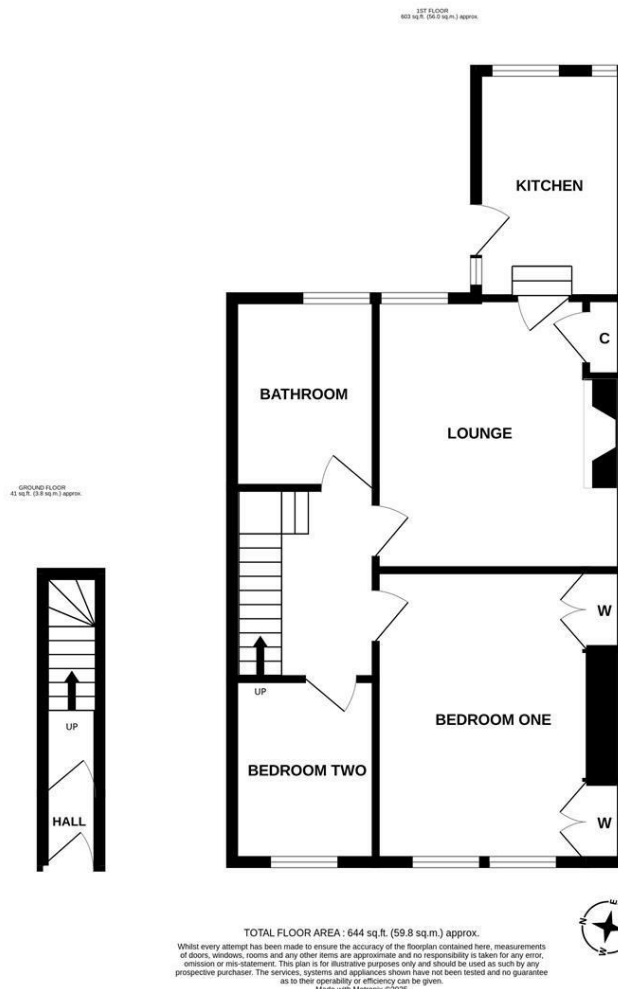
Ideally located on Beaumont Terrace, Gosforth. This two bedroom upper floor flat is a stone's throw from excellent local schools, is within walking distance to the shops, cafés and restaurants of Gosforth High Street and within close proximity to Gosforth's Central Park and South Gosforth Metro Station.

Newly redecorated and with new flooring in the lounge & bedrooms, the accommodation briefly comprises: entrance lobby through to entrance hall with stairs to first floor landing; lounge with feature fire and part fitted alcove storage; kitchen with fitted units, work surfaces, appliances, spot lighting and side door access to stairs into the rear yard; bathroom WC complete with three piece suite; two bedrooms, bedroom one a very spacious double with dual windows and fitted alcove wardrobe storage. Externally, a shared rear yard with wall boundaries to and access to the rear service lane. Also with on street parking to the front.

Available on a furnished basis and ideal for professionals, this property is not to be missed!

Available Immediately | £1,050pcm | First Floor Flat | Two Bedrooms | 644 Sq ft (59.8m²) | Lounge | Kitchen | Bathroom WC | Shared Rear Yard | Excellent Location | Furnished | On Street Parking | Newly Redecorated | New Flooring | GCH & DG | Council Tax Band: A | EPC Rating: C

£1,050 PCM



IMPORTANT NOTE: These particulars and the descriptions and measurements herein do not constitute representation and whilst every effort has been made to ensure accuracy, this cannot be guaranteed.

